

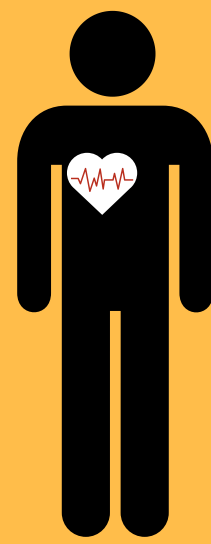
IS IT SEPSIS ?



Fever or Chills



Short of Breath



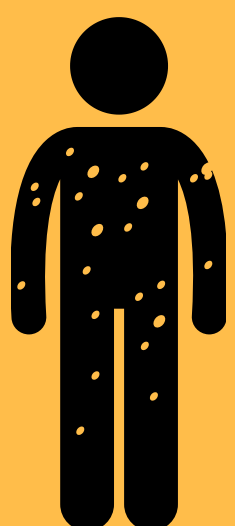
Fast Heart Rate



Sleepy or Confused



Little or No Urine



Pale or Blotchy Skin



Vomiting or Diarrhoea



Pain or Extreme Discomfort

I feel like I might die

Sepsis can kill within hours

Sepsis is an extremely bad reaction to an infection and kills more Australians than car accidents.



Get to know the signs of sepsis and if you suspect sepsis:

CALL 000 or get to a hospital and ask : **IS IT SEPSIS?**



ISITSEPSIS.ORG

T
4
Thomas